

Lake Townsend Yacht Club

Tell Tales

MAY, 2022



all things seem
possible in

May!

Extra, Extra, Read All About It

LTYC's 2022 Mayor's Cup

LTYC's 2022 Mayor's Cup is set for **Saturday June 4th and Sunday June 5th.**

This is our annual invitational regatta, so besides our own fleet of competitors, we are expecting boats from Lake Jordan, Lake Norman, and other regional clubs to participate as well.

Beside the 2 days of racing, we'll have a great social on Saturday evening with great food and drink along with the camaraderie that always occurs when you get a bunch of avid sailors together after a day of competition.

So, check here to get
[Notice of Race and a link to the event registration.](#)



May 14 2022 Racing Report

Thirteen boats with skippers and crews had a great time sailing at Lake Townsend Saturday May 14.

The wind was challenging, but not as strong as last month, and while there was rain in the morning... that let up by the time we got out on the water.

Our great race committee set windward leeward courses of the proper length and direction.

The first race had good strong winds of around 12 knots, and was set up with long(ish) legs for 2 laps. Because of the length of the legs, the course was shortened to finish at the windward mark of the 2nd lap.

After adjusting the position of the windward mark to shorten the legs, the 2nd race was set for just one lap. With average wind of 9 knots, it lightened even more as the race progressed so this turned out to be the last race of the day!

Please consider sailing in LTYC's annual Mayor's Cup on June 4 and 5. **We will have a social in Shelter 10 after the races on Saturday June 4!** The races on Saturday, June 4 will also count towards the Saturday Series race trophies.

There is still room for race committee volunteers (and sailors) for those two days.

In Memoriam



Betty Grantham Holjes, died at Friends Homes Guilford Friday, May 13, 2022 at the age of 94.

Sailing was a favorite pastime that led to her efforts to establish a recreational sailing program in Greensboro. Betty, with her husband Mel Holjes, was a founding member of the Lake Townsend Yacht Club, spending many weekends at regattas over the years.

Highlights of their sailing were winning the Governor's Cup and forming lasting friendships.

Betty was a homemaker who enjoyed volunteering for the American Red Cross and serving as a Girl Scout leader

A memorial service will be held on June 10 at 11:00 am in the living room of Friends' Homes at Guilford College, 925 New Garden Road.



"Betty was a special lady and friend. I remember many good times sailing with Mel and Betty, we spent a lot of time planning and helping organize The Lake Townsend Yacht Club. She was a unique and caring lady and friend to many."

Carol Meetze-Moates

IT'S THAT TIME AGAIN

2022 Memberships Renewals Are Due

The Benefits of Membership

Competitive Fun Sailing

On the second Saturday of each month we hold our regular LTYC race series. This is 'around the buoys' racing where courses are laid out and there is a Signal Boat (pontoon boat) which carries the Race Committee who administer the race. There are specific times set to attend an online competitors meeting prior to the race day and to have your boat at the starting area to race. Typically, there are three races run.

Social Fun Sailing

On the fourth Saturday of each month we have a Sail-abration! There is no set time or agenda. This weekend is for daysailing and cruising just for fun. Club members are there who may either invite you to go sailing on their boat or give you advice about sailing your boat or a rental. It's a good time to practice and improve your sailing or racing skills. Best way to learn is to be onboard with one of our experienced skippers.

Other Benefits

Seminars and training for beginning and intermediate sailors

Availability of club boats including one Lightning, two Flying Scots, two Wayfarers, and four Tanzer 16s. All are ready for use, mast-up and on trailers. For more information, see the [club sail-boat usage policy, agreement, and reservations](#) in the Members' Cove.



Continued on next page

Continued from previous page

New Benefit for Members

The Lake Townsend Yacht Club Board has approved the purchase of Annual Passes for the launch of up to two club boats on any given day,

This will help promote more sailing participation by new and current club members.

Usage of Club Sailboats **requires** that the member has:

Signed the [online agreement](#), that they have small sailboat seamanship skills as a skipper, and can

- Maneuver a small sailboat with accuracy and precision in close proximity to other sailboats.
- Leave and return to the dock under sail.
- Launch and retrieve the sailboat.
- Rig, derig, and store the sailboat.
- Have participated in or reviewed capsized/overboard activities.

Note: Failure to follow the below requirements and restrictions may result in temporary disqualification.

- Unless being used during a club event, sailors need to register with the Park Office
- Usage reservations are required, and are made by filling out the [usage scratch sheet](#) beforehand.
- Damage or equipment failure will be reported on the specific boat's online maintenance sheet or emailed to ltycboard@laketownsendyachtclub.com
- Unless being used during a sailing class or club event, LTYC Wind limits are: <10 knots steady, gusts <12knots.
- Boats are expected to be returned in as good as, if not better condition than when removed from dry dock storage.
- Members are encouraged to claim a work activity from the maintenance log as their time/skills permit in exchange for the use of the boat

Let's Learn to Sail!

Of the 17 separate classes we have scheduled for this year, 9 have already been filled!



Don't miss out. Register early to make sure you lock in one of the rapidly disappearing slots. Early registration will give you the widest range of choices and if you want this training wouldn't it make sense to get it as early as possible rather than at the end of the sailing season?

There are Beginner courses, Intermediate courses, Individual lessons, Sail Camps for Juniors, and even a Learn to Race course.

You can still choose between the 8 classes that still have room (assuming you act now), so check out this year's schedule and then click on the link to the Online Registration Form.

Visit the LTYC website to sign up for one of the classes listed.

Learn to Sail:

[Learn-to-Sail \(laketownsendyachtclub.com\)](http://laketownsendyachtclub.com)

Volunteers Needed!

All classes are in need of volunteers. Visit <https://laketownsendyachtclub.com/activities/InstructorSignUp.asp> to sign up as an Instructor, Assistant, or Scat Boat Driver.

High School Sailing Report

Practice, Practice and More Practice!

Sailing is no different from any other sport-if you want to improve, if you want to win, you have to practice and train! The High School Sailing Team has been doing just that this spring, and the results show. At our Saturday practices we work on all aspects of dinghy racing, including upwind and downwind speed, starts, mark rounding, tacking, gybing, strategy and tactics. Our coaches use photos and videos shared on our group text app to critique and analyze mistakes and areas needing improvement.

But it's not all work. Between drills we have fun-teens with their friends will always find a way to have fun! Our favorites include rafting up to the coach boat and telling goofy stories, such as the dumbest thing you've ever done in school; and recently, playing musical boats! We often play music during practice. We can always find a way to have fun!

We hope you enjoy these pictures of our practices over the last month and racing in the Saturday Series.



Continued on next page











Greetings,

If you have not yet renewed your 2022 LTYC membership, you know it is the deal of the century. We are thrilled to be able to see you all at the lake in the coming weeks.

[Membership Renewal Link](#). Just do it, it will be one more thing off your list. To those who have already renewed, Thank you!!



And, Just a few bits of information...

The beach is now open for multihulls, lasers, and small boats.

June 4th and 5th will be the Mayor's Cup Regatta. Mark it on your calendar and if you haven't already registered... [Do It Now!](#)

We need Race Committee for all of our Saturday Series race days! Please sign up even if you do not have experience on race committee. We need you!! An experienced PRO will teach you what you need to know.

Being on Race Committee is a great way to learn more about sailing and racing and to have a great day on the water.

Here is the link to register for the races. This is also where you can sign up as "available to crew" or connect with "skippers who need crew". Use tabs at the bottom of that page to select particular days you would like to sign up for. Use this link to sign up for race committee as well.

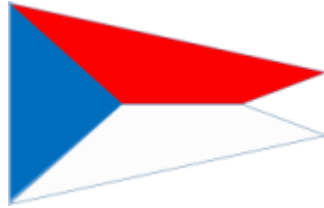
If you are new to race committee, just add your name and show up on race day.

All are welcome. [Sign Up \(laketownsendyachtclub.com\)](http://laketownsendyachtclub.com)

We've Got the Beat!

North Carolina Sailboat Racing News

The information on the following pages came from the May 2022 edition of *THE BEAT!*



65th Annual **North Carolina Governor's Cup** June 17-19

Largest Dinghy Regatta on the East Coast!

On the water racing clinic on Friday, June 17.

Two racing circles on Saturday and Sunday!

Famous dinner meal Saturday night.

Camping at Henderson Point.

Most Spectacular Sailboat Racing Venue!

Click [here](#) for the Notice of Race and registration



In Case You Missed It

Dear members and supporters (Constituents / concerned users of Lake Townsend),

You are constituents, concerned users, of Lake Townsend. And you have a voice.

The **Save The Docks Lake Townsend** initiative will succeed based on three criteria, **total funds** and, just as importantly, **total pledges / names**.

Your name will not be revealed to anyone.

Your pledge amount will not be revealed to anyone.

If we as constituents of the lake don't express our opinion, city and park management can not know that we care and can not know that we exist.

So, PLEASE, even if you can only pledge a small amount, it is really really important that you put your name in and pledge at <http://www.savethedocks.lt.org/>.

Adults should pledge, even if you are only an occasional user of the lake.

Kids should pledge, even if they have only taken the intro class or participated in the HSST.

Parents should pledge, your kids enjoy the lake only because the docks are usable.

Supporters should pledge, even if you only visit the lake.

Friends should pledge, to ensure this wonderful public resource is there in the future.

Aunts/ Uncles/ Relatives ... you get the idea.

Plans are to present the total pledge amount only and then the counts of constituents (that's you) to the Parks Dept, Mayor, City Counsel and City Planner.

<http://www.savethedocks.lt.org/>

Save The Docks!

Thanks,

Join US Sailing

US Sailing takes great pride in administering and providing The Racing Rules of Sailing to members of sailing organizations. The rules provide integrity to competitive sailing and are an integral part of our sport. Sailboat racing relies on the rules to ensure that competitions are fair, consistent, and keeping sailors safe on the water.

The Racing Rules of Sailing is published every four years by World Sailing, the international authority for the sport. These rules, amended by U.S. "prescriptions," govern sailboat racing in the United States and in the portions of international races that pass through U.S. waters.

The Racing Rules of Sailing for 2021-2024 takes effect on January 1, 2021.

US Sailing has developed a NEW mobile-optimized Racing Rules App that includes the racing rules and other resources, including the ability to file a protest through the app, a whiteboard for diagramming boat-on-boat interactions, and an extensive resource library. The text of the rulebook is fully searchable and there is also a traditional index. Non-members can log into the app as a Guest and will be able to see limited content. US Sailing will continue to add more useful and innovative features to the app as they move forward.

In line with US Sailing's commitment to sustainability, the mobile app is available at no cost to all US Sailing members and is the primary distribution channel for The Racing Rules of Sailing for 2021-2024. Please note that US Sailing will not be automatically mailing copies of the printed rulebook to members in 2021. All members are entitled to purchase one printed rulebook for a flat fee of only \$7.00 and may order additional copies at the standard 25% member discount rate. The paper and waterproof versions of The Racing Rules of Sailing for 2021-2024 and the Sailor's Guide to the Racing Rules are now available for pre-order.

The app is ready for download! You can download the Racing Rules App from US Sailing's new Racing Rules of Sailing web page. [Click here to learn more and download.](#)

Need some guidance on how to use the app? [Click here to review the step by step tutorial.](#)



Not yet a US Sailing Member or need to renew?

You can join US Sailing through [Lake Townsend's MVP \(Member Value Partner\)](#) program and save up to 20% on your US Sailing Membership dues. LTYC receives credit for every member that joins US Sailing under [LTYC MVP program](#). As a US Sailing member, In addition to the App and discounted hardcopy rule book, you get a US Sailing Member discount on regatta registrations, discounts at numerous nautical retailers including US Sailing's online store. Your US Sailing Membership matters as it is your membership that makes possible the US Sailing programs that are getting new sailors on the water and making sailing more accessible for everyone. Make sure you see Lake Townsend Yacht Club MVP Program at the top of the page.

Membership Types:

Youth Membership - \$25 (MVP Program discount from original \$30 price)

Individual Membership - \$55 (MVP Program discount from original \$65 price)

Family Membership - \$85 (MVP Program discount from original \$115 price)

US Sailing Home | CONTACT US | SIGN OUT

MEMBERSHIP MYUSSAILING CALENDAR SHOP DONATE CONTACT

US Sailing Home | CONTACT US

LAKE TOWNSEND YACHT CLUB MVP PROGRAM

Yacht Club Personal Info Discounted Membership Options Purchase Confirm Order

Are you a current member?

If you have ever been a US Sailing member before, select 'Yes'.

Yes

No

Previous Next

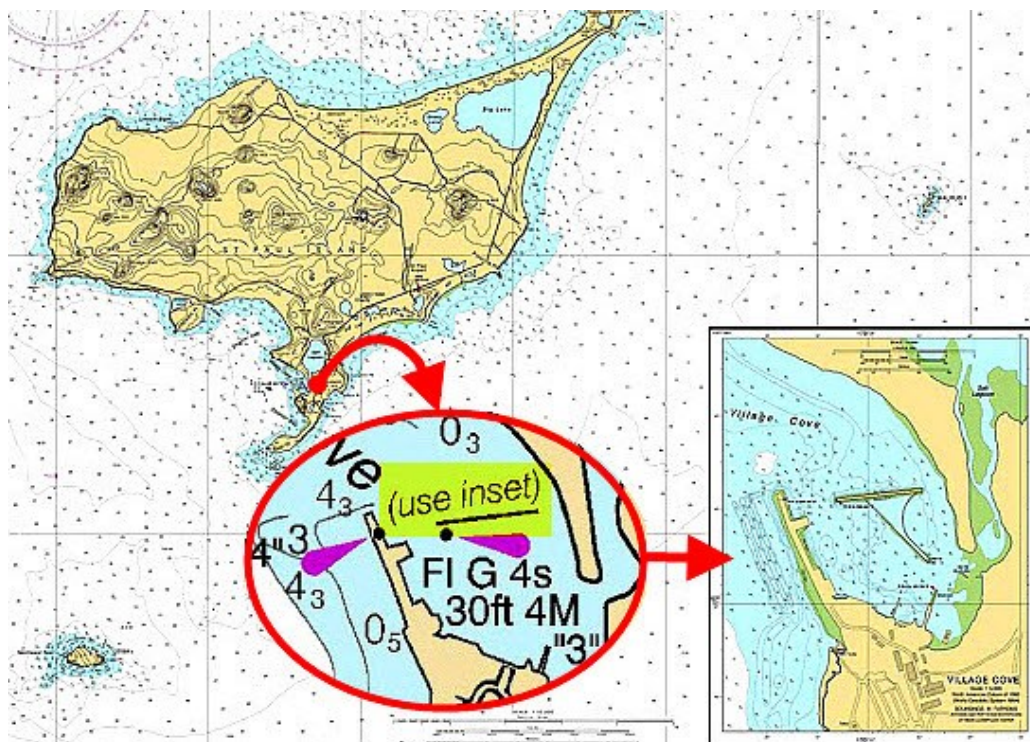
If you'd rather, you can join for 3 years and save even more on US Sailing dues. Just call US Sailing directly to renew and mention that you are renewing under LTYC's MVP. LTYC will still receive your membership credit.



How to Sail Into a Harbor with 'Chart Insets'

Captain John,
 Www.skippertips.com
 Captainjohnskippertips.com

Imagine that you plan to sail to a new anchorage in a cove to the north. You've pulled the coastal chart that shows the approach, but you are unable to locate a large scale chart. Take a look at one of the unique 'two-for-one' benefits you can receive on some nautical charts.



Start a passage plan with a smaller scale chart that encompasses the sailing area and approaches. Here we have a chart off the south coast of Alaska. Our intentions are to anchor (or tie up if anchorages are not available) in Village Cove on the south side.

Look just inside the area of Village Cove and you can see a chart note which says, 'use inset'. Some chart makers save lots of time and money when they insert large scale chartlets onto the smaller scale chart.

Continued on Next Page

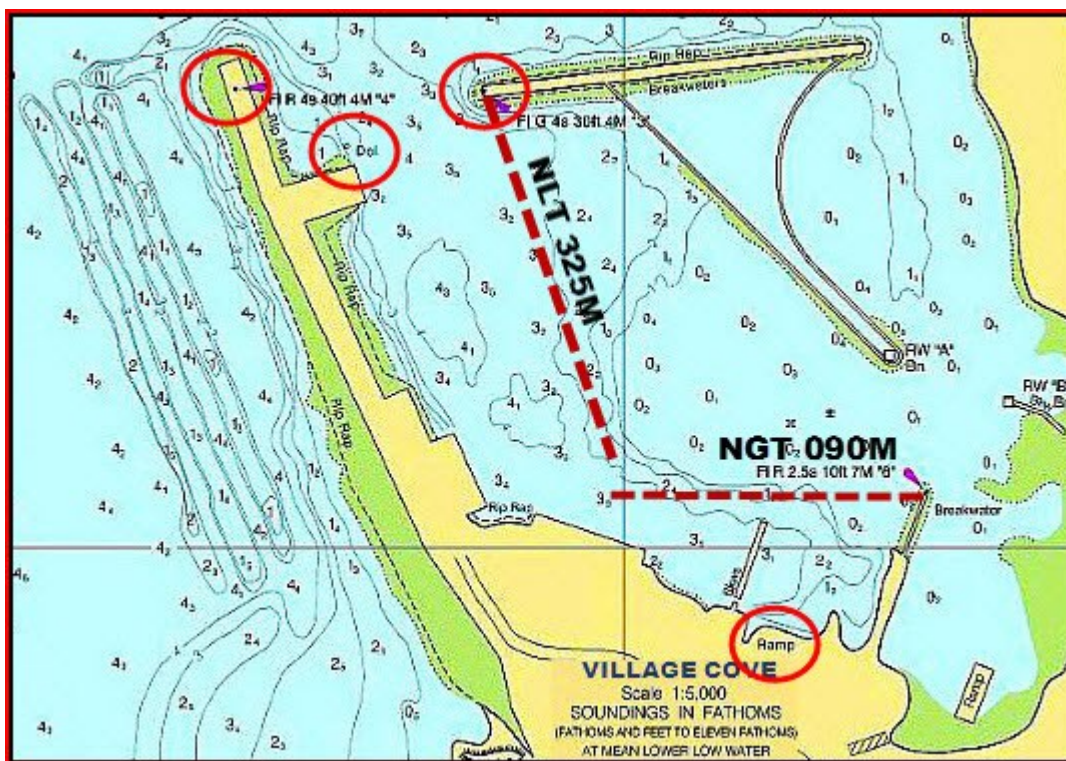
Continued from previous page

And sailors save money because there will be no need to purchase a separate larger scale chart for entering a tight harbor or anchorage. Of course, this will not always be the case. But insets are a huge benefit and make navigation safer under sail or power.

Once you see a note that indicates an inset exists, look to the chart corners. Here, the inset has been embedded into the lower right corner. Now let's use this inset to plan a safe entry into Village Cove that will serve us by day or by night

How to Use an Inset to Enter a Harbor

Use the same amount of care to annotate, label and highlight a chart inset. Once you sail on to the inset of a chart, you will have no time for the finer points of navigation. Take the time now to complete 90% of your navigation for an easier, safer entry.



Our inset will be on a 1:5000 scale, perfect for close quarters navigation. As you might recall, the smaller the second number of the ratio, the greater the detail of the cartography. Soundings on the inset are in fathoms (1 fathom = 6 feet); soundings less than 11 fathoms are indicated in fathoms and feet (the sub-scripted number shows the remainder of feet).

We will enter between two lights that mark the outermost breakwater. Both of these foundations are surrounded by Rip Rap. Light 3 to port shows a flashing green four second characteristic; light 4 to starboard shows a flashing red four second characteristic. A lone dolphin (similar to a piling) will be visible just past light 4 to starboard.

Continued on next page

Continued from previous page

Primary shoals less than one fathom are on the port side as we enter so we will favor the starboard side. We will set up two danger bearings. Let's set up our first danger bearing with Light 3. We run a bearing line along the edge of the two-fathom curve, which will provide a margin of safety for keel clearance. Our first danger bearing will be Not Less Than (NLT) 325° Magnetic.

You will shoot this bearing 'over the shoulder', or behind you. Note how Light 3 will be aft of the boat once you enter Village Cove. Use a handbearing compass. Turn around and take bearings to the light after you sail past. Make sure that those bearings read 325°M or higher at all times.

You will have good protection from wind or swell except from the north-northwest. If winds are expected to shift to the northern quadrant, tying up would be a better option than anchoring. You might be able to tie up behind the first breakwater to the south next to the boat ramp (note the "Ramp" between the two breakwaters).

Let's find another aid to navigation to help us stay in safe water if we need to sail to the boat ramp. We can use Light 6 (flashing red every 2.5 seconds) on the end of the far breakwater as a danger bearing. Plot a bearing line along the edge of the two-fathom curve. Our second danger bearing will be Not Greater Than (NGT) 090° Magnetic.

We would also plot and label two courses onto the inset. One would be the entrance course between lights 3 and 4. The second course would take you into the vicinity of the boat ramp. In the illustration, these courses are not shown to reduce clutter (the actual inset is much larger than the illustration).

Check the predicted time and height of high and low water. Will your draft allow safe passage for anchoring or mooring? Annotate and highlight your inset just as you would the main chart body. Choose colors that will stand out day or night (and not disappear under a red or blue night light).

CLASSIFIED ADS

YOUR AD WILL RUN 3 MONTHS.

IF NOT RENEWED BY ADVERTISER, THEY WILL BE DELETED.

SEND YOUR CLASSIFIED TO :

newsletter@Laketownsendyachtclub.com



FOR SALE: Wayfarer #560 with trailer.

The price is \$4500.

It is a pretty, blue-hulled Wayfarer in good shape. Race and cruise ready

Lots of restoration and upgrades (new paint, blades, etc)

More details, photos and contact info at [W560_Classified\(laketownsendyachtclub.com\)](http://W560_Classified(laketownsendyachtclub.com))





Please Like LTYC on facebook

- Check in at LTYC on facebook
 - Tag us
 - Write an endorsement for LTYC
 - Like LTYC on the "Like" page
 - Post a review of LTYC on FB
- If you need help to post pictures or a video on our page, please contact JC Aller at aller.jc@gmail.com

Please follow our High School Racing Team on Instagram at [ltycsailingteam](https://www.instagram.com/ltycsailingteam), and of course, on facebook at www.facebook.com/laketownendyachtclub/

Next newsletter deadline: June 19, 2022

◆ Lake Townsend Yacht Club Board

Commodore: Andy Forman	◆ commodore@laketownsendyachtclub.com
V. Commodore/Racing: Conal Deedy	◆ vicecommdore@laketownsendyachtclub.com
Rear Commodore/Education: Ron Washburn	◆ education@laketownsendyachtclub.com
Treasurer: Kim Jones	◆ treasurer@laketownsendyachtclub.com
Secretary: Linda Ford	◆ secretary@laketownsendyachtclub.com
Equipment: Mark Green	◆ equipment@laketownsendyachtclub.com
Membership: Leigh Wulforst	◆ membership@laketownsendyachtclub.com
Social Outreach: Trish McDermott	◆ lgs@laketownsendyachtclub.com
Marketing:	OPEN – Need a volunteer!
Newsletter: Sid Hale	◆ newsletter@laketownsendyachtclub.com
Social Media: JC Aller	◆ socialmedia@laketownsendyachtclub.com

You don't have to be a board member to help out. Everything this club does is done by volunteers. Please contact the individual board members to see how you can contribute.

Thanks for making LTYC the best!

Board meetings are open to all members. They are held virtually, via, Zoom the first Thursday of each month at 6:00 p.m.