

LAKE TOWNSEND YACHT CLUB

2011 CLUB SERIES



NOTICE OF RACE & SAILING INSTRUCTIONS

1 RULES

The regatta will be governed by the 'rules' as defined in the Racing Rules of Sailing.

2 ENTRIES

Boats which have a US Sailing Portsmouth handicap rating and whose skippers are members of Lake Townsend Yacht Club may enter by registering prior to the competitors' meeting held at the club's flag pole. A guest may skipper in one race weekend.

3 NOTICES TO COMPETITORS

Notices to competitors will be posted on the official notice board located on the club equipment shed.

4 CHANGES IN SAILING INSTRUCTIONS

4.1 Changes in the Sailing Instructions will be announced at the Competitors' Meeting and posted on the notice board immediately after the Competitor's Meeting.

4.2 Oral changes to the Sailing Instructions may be made on the water by raising Race Signal L and notification of the change given to and acknowledgement received from each boat.

5. SIGNALS MADE ASHORE

5.1 Signals made ashore will be displayed on the club flagpole.

5.2 When flag AP is displayed ashore, "1 minute" is replaced with "not less than 30 minutes" in Race Signal AP. This changes Race Signal AP.

6 SCHEDULE OF RACES

6.1 Races are held on the second full weekend of each month.

6.2 The *Frostbite Series* is held in the months of December, January, February and March on Saturdays only, with a minimum of 3 races required to constitute a series.

6.3 The *Saturday Series* is held in the months of April, May, July, August, September and October on Saturdays only, with a minimum of 5 races required to constitute a series.

6.4 Sunday racing is held in the months of May, July, August, September and October on Sundays only, with each Sunday comprising a one day regatta.

6.5 Three successive races are scheduled each day. Race Committee may run additional fun races which will not be scored as a series race by raising 2nd Substitute at the finish of the third race.

6.6 Time schedules are as follows:

<i>Race Series</i>	<i>Competitors' Meeting</i>	<i>First Warning Signal</i>
<i>Frostbite</i>	1130	1230
<i>Saturday</i>	1100	1200
<i>Sunday</i>	1100	1200

7 CLASS FLAGS

Flying Scot – White Flag displaying the class logo.

Open Monohull - Numeral Pennant ONE

Open Multihull - Numeral Pennant TWO.

If needed, additional Class Flags will be announced at the competitors' meeting, and then posted on the official notice board.

8 RACING AREA

The racing area will be on Lake Townsend.

9 THE COURSE

9.1 See Attachment *Race Courses* for the courses.

9.2 The course to be sailed and the approximate compass bearing to Mark 1 will be displayed from the Race Committee signal boat.

10 MARKS

Marks 1, 2, and 3, will be 3-foot diameter by 5-foot high inflated, orange, truncated cones. Starting and finishing marks will be 2-foot diameter inflated, orange, spheres or 4-foot diameter inflated, yellow, spheres. Gate Marks will be 2-foot high inflated, yellow-green spheres.

11 THE START

The starting line will be between a signal gallows displaying an orange flag on the Race Committee signal boat at the starboard end and the port-end starting mark.

12 THE FINISH

The finishing line will be between a staff or halyard bearing an orange flag at the starboard end and the port-end finishing mark.

13 TIME LIMITS

13.1 The time limit will be 60 elapsed minutes for the first boat in each class. The time limit will be 90 elapsed minutes for all other boats.

13.2 Race Committee may assign a boat its finish position on the water to boats failing to finish within 30 elapsed minutes after the 2nd boat finishes or within the time limit, whichever is later. This changes rules 35 and A5.

14 PROTESTS AND REQUESTS FOR REDRESS

14.1 Protest forms are available at the official notice board. Protests shall be delivered at the race office located in the marina building within protest time that begins when the Race Committee signal boat docks and signals with one sound signal and ends 30 minutes later.

14.2 Notices will be posted on the official notice board within 30 minutes of the protest time limit to inform competitors of hearings in which they are parties or named as witnesses. Hearings will be held in the race office located in the marina building beginning 15 minutes after the notices are posted.

15 SCORING

15.1 Scoring will be as follows. This changes rules 90.3, A2, A4, A6 and A9.

15.2 US Sailing Association's Portsmouth Yardstick and the Wind Dependent Handicap Factors will be used for all classes.

15.3 The Frostbite Series will have one handicap class consisting of all monohull and multihull boats.

15.4 The Saturday Series will start with two fleets: monohull and multihull. Once four boats of the same one design class compete prior to October race day, a one design class will be established, and all finishes for that class will be scored separately

15.5 Sunday racing will have one handicap class consisting of all monohull and multihull boats.

- 15.6 For the Saturday and Sunday racing, points received by a boat and its skipper are inseparable. The points received by the boat stay with the skipper and boat, and points received by a boat and skipper may not be transferred to another boat or skipper, with the exception that points will be transferred from one boat to another of the same one design class or the City Greensboro rental boats provided the skipper of the boats is the same person.
- 15.7 For the Frostbite Series, the skipper receives the points.
- 15.8 Scoring will be as follows:
 - (a) A boat that starts and finishes a race is scored 3 points plus 1 point for each boat beaten.
 - (b) A boat that is scored DNS, DNF, DSQ or RAF receives 2 points.
 - (c) A boat that is scored DNC receives 0 Points.
- 15.9 A boat scored DNF, DNS, DSQ or RAF is a boat beaten. A boat scored DNC is not a boat beaten.
- 15.10 A member not serving on a Race Committee at least once during the Saturday Series will lose their highest score for the Saturday Series.

16 SAFETY REGULATIONS

- 16.1 Before the first warning signal each day for the first class, each boat shall sail pass the Race Committee signal boat and hail her sail number and be acknowledged by Race Committee. Only Race Committee can protest a boat for failure to check in. This changes rule 60.1a.
- 16.2 A boat that withdraws or retires from a race shall notify Race Committee as soon as reasonably possible. Only Race Committee can protest a boat for failure to notify Race Committee. This changes rule 60.1a.
- 16.3 During the Frostbite Series, rule 40 is in effect even if the Y-flag is not displayed.

17 PRIZES

- 17.1 Prizes will be awarded to members in good standing for the Saturday Series and Frostbite Series based on the average number of boats competing in a class with one trophy for every two boats. Fractions are rounded up.

<i>Average number of boats</i>	<i>Number of Prizes</i>
2	1
4	2
6	3
8	4
etc.	

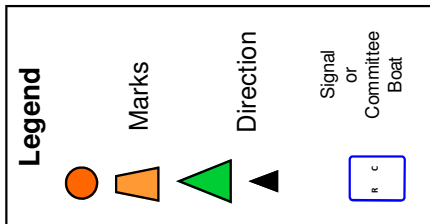
- 17.2 Prizes will be awarded each day to members in good standing for the Sunday racing.
- 17.3 The Board of Directors reserves the right to award additional prizes.

18 DISCLAIMER OF LIABILITY

Competitors participate in the series regatta at their own risk and to the fullest extent permitted by law, waive any right to sue the race organizers (organizing authority, race committee, protest committee, host club, sponsors, or any other organization or official) involved with the event with respect to personal injury or property damaged suffered by them or their crew as a result of participation in the series regatta and thereby release the race organizers from any liability for such injury or damage.

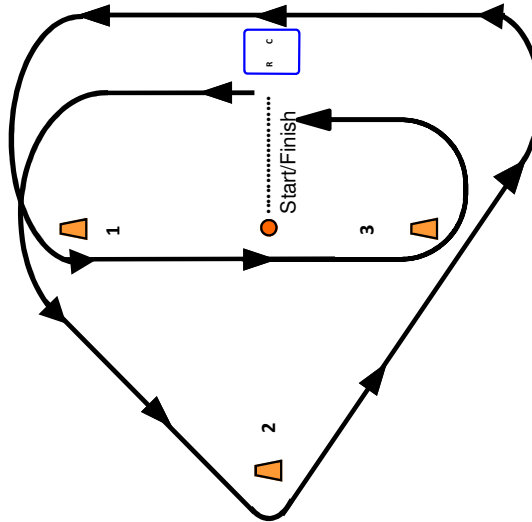
2011 LAKE TOWNSEND YACHT CLUB SERIES

ATTACHMENT 'A' RACE COURSES



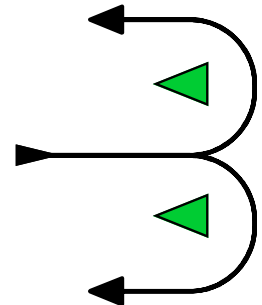
Course "O"

Interior Angles of Marks	
1	45°
2	90°
3	45°



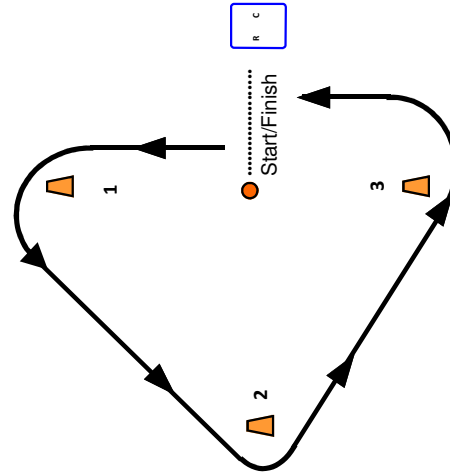
Gate Note

If employed, boats must pass between the two marks of the gate in the direction from the last mark. Leaving the port gate to port or the starboard gate to starboard.



Course "T"

Interior Angles of Marks	
1	45°
2	90°
3	45°



Marks

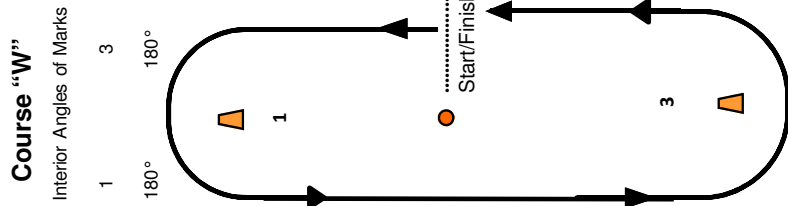
Start - 1 - 2 - 3 - Finish
 "T2": Start 1 - 2 - 3 - 1 - 2 - 3 - Finish
 "T3: Start - 1 - 2 - 3 - 1 - 2 - 3 - 1 - 2 - 3 - Finish

Marks

Start - 1 - 2 - 3 - 1 - 3 - Finish

2011 LAKE TOWNSEND YACHT CLUB SERIES

ATTACHMENT 'B' RACE COURSES

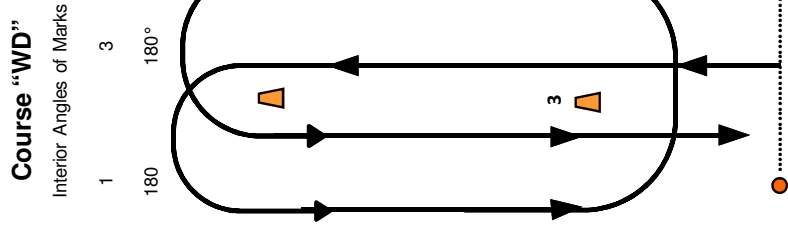


Marks

Start - 1 - 3 - Finish

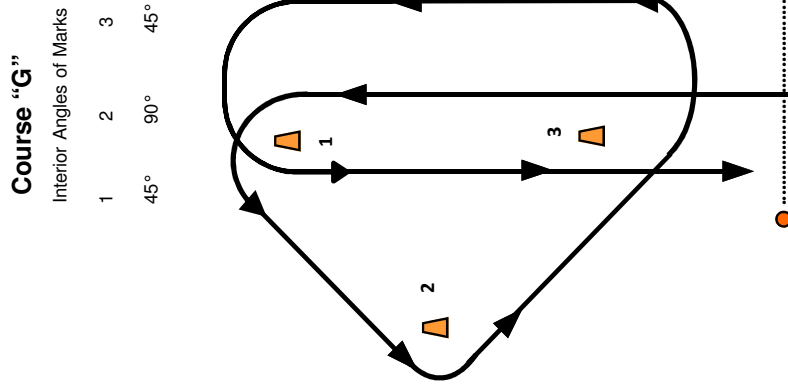
"W2": Start - 1 - 3 - 1 - 3 - Finish

"W3": Start - 1 - 3 - 1 - 3 - 1 - 3 - Finish



Marks

Start - 1 - 3 - 1 - Finish



Marks

Start - 1 - 2 - 3 - 1 - Finish